



AweSTEM

<https://msudenver.edu/advanced-stem-education/awestem>

Thank you for attending our CASE Symposium with the Mathematics and Statistics Department!



Students tackled the Tower of Hanoi puzzle, played the Game of Set, created Card Symmetry Sculptures, helped construct a Sierpinski Pyramid, explored probability and statistics with the Statistics Club, and made repeating patterns using Pinwheel Tiling.

Later, Dr. Francis Su delivered a plenary talk that changed how **57%** of the audience thought about math, and **40%** showed interest in joining a Reframing Math Workshop. You can see photos and learn more about our attendees by visiting our Symposium website.

[Symposium Website](#)



Shout out to our Symposium Student Ambassadors!

Their dedication and hard work were integral to making this event a huge success.

From ensuring that Dr. Su felt welcomed on our campus to ushering him smoothly through all the events, they truly went above and beyond. Their efforts in assisting the high school students, making them feel comfortable, and guiding them to lunch and the outreach session were invaluable. The setup and teardown tasks could not have been managed without their support.

Thank you for your outstanding contributions and for being such an awesome team!

CASE In Point

[Past CASE In Points](#)



Thank you Dr. Mike Jacobs (CHE)

Big thanks to Dr. Jacobs for all of his assistance provided in planning, setting up, and tearing down the event locations during the Symposium. His help with signing in participants and promoting the Symposium to his General Chemistry students was invaluable.

The Math Outreach really highlighted the connection between math and human flourishing. Math is a fundamental tool for STEM students in solving complex problems, modeling reactions, predicting behaviors, and achieving a deeper understanding of concepts quantitatively. Dr. Jacobs recognized this and brought his General Chemistry class so they could make these connections to better understand chemical concepts.

Thanks again for all your support in making the CASE Symposium a great success!

CASE in Point is our way of showcasing achievements (large and small) by our students, faculty, and staff each month.

[Nominate a Student - Faculty Member - A Team](#)



Center for Advanced
STEM Education

Congratulations to our Larry Johnson STEM Opportunity Scholarship Recipients

Sarah Rones
Biology Major

Luke Bergman
Biology Major

A Fond Farewell

CASE would like to acknowledge and celebrate Elizabeth Simonton, whose last day with us at MSU Denver was November 30th.

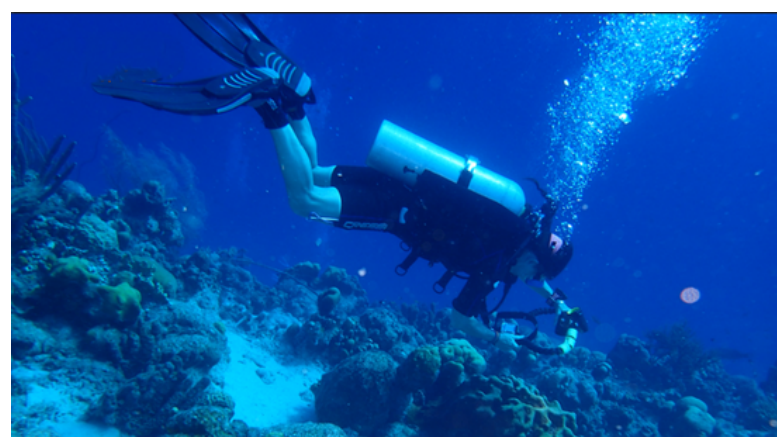
Elizabeth was an integral part of our BUILD and Noyce Programs, and we were all fortunate to have her on our team. Her contributions enriched our programming, bringing a fresh perspective to our workshops and communications. It was Elizabeth who creatively named our AweSTEM newsletter.

As we bid farewell to Elizabeth, we would like to extend our best wishes for her next adventure. We are excited to see all that she will accomplish in the future.

Thank you, Elizabeth, for your dedication and hard work. You will be missed!

In Memoriam

Dr. Maria Cattell
Department of Biology



We honor Dr. Maria Cattell, a scientist whose curiosity, passion, and dedication enriched the lives of her colleagues and students at MSU Denver. Her research shed light on one of Earth's most fragile and vital ecosystems: coral reefs. She worked tirelessly to understand the genetic pathways that sustain coral health and symbiosis with algae. Dr. Cattell was equally devoted to education, inspiring students to master genetic concepts and apply them through hands-on research. Her goal was to spark curiosity and foster a love of science in every learner.

Her journey to MSU Denver was shaped by a diverse scientific background. After earning her doctorate at the University of South Florida, she transitioned from ecology to molecular genetics, discovering a lifelong passion for bench science. Following time dedicated to raising her children, she resumed research at the University of Colorado before joining MSU Denver.

Beyond the lab, Dr. Cattell was a devoted mother and an avid outdoors enthusiast who found joy in hiking, skiing, and running. She is remembered not only for her scientific contributions but for her laughter, mentorship, and unwavering commitment to marine conservation. Her legacy lives on in her students, colleagues, children, and the ecosystems she worked to protect.

Coming in January.....

Open House for the New CASE AES STEM Learning Center

Contact Information:

Dr. Meg Filbin
mfilbin1@msudenver.edu

Lori Taylor
ltaylor50@msudenver.edu

Linda Sivertson
lsivert1@msudenver.edu



<https://msudenver.edu/advanced-stem-education/>

Never miss an AweSTEM Newsletter

[Subscribe](#)