

August

— 2024

The Advocate



**THE GENDER
INSTITUTE
FOR TEACHING
& ADVOCACY**
MSU DENVER

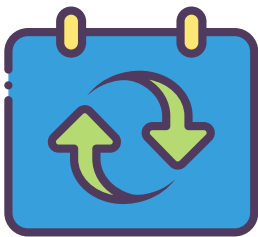


In this issue:

- Upcoming Events
- Soapbox
- Featured Scholarship
- Featured Courses
- Resources & Reminders



Reoccurring Events



Get a free warm meal on us!

CROC-POT



COOKOUT

2nd and last Wednesday of every month!



Upcoming Events



The Gender Institute for
Teaching & Advocacy

Invites You!

August
27th
2024
1-4pm

FIESTA ANUAL DE PALETA!

(Annual Paleta Party)

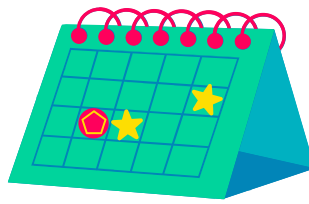
Boulder Creek
Room 132

Gita@msudenver.edu

Come say hello and learn about our courses and support services!
wheelchair accessible + gender inclusive bathroom



Upcoming Events



Women & Gender Equity in Leadership Summit



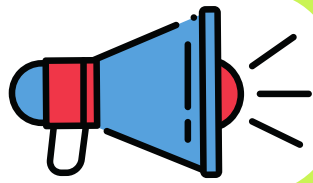
SAVE THE DATE

FRIDAY,

OCTOBER

25TH, 2024





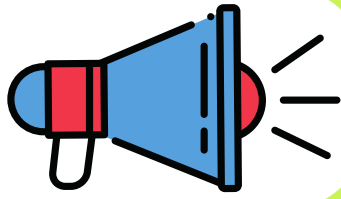
Paid Parking, the Darling of Capitalism

Written by Lauren Coats

Let's talk about parking. We all know that parking on campus is a necessity, but does it benefit students and staff? Auraria campus has over fifty-five hundred parking spaces, with the lower rate lots averaging \$6 a day per space, and the more expensive lots averaging \$8 per day. Even if only half of the parking spaces are used, Monday-Friday, at the lowest rate, parking would bring in \$16,500 a day. That is \$330,000 a month, and \$3.9 million per year. This extremely low estimate does not even include inflated evening and weekend parking. Now AHEC has found a way to squeeze even more out of us under the guise of "convenience and accessibility."

There are no longer parking meters on campus. Over the summer they were replaced by ParkMobile spaces that must be paid for via app or computer (or toll-free number if you do not have access to the app or computer). This first assumes that everyone has access to a smart phone. It also assumes that everyone has access to a debit or credit card to pay for these spaces. There is a surcharge for online payment, and you now can only add time in half-hour increments. Here for an hour and thirty-five minutes? You will be paying for 2 full hours. Realize you will be here ten minutes longer than you anticipated? You will need to add a full half hour to your time. You may also notice that all the meters in the same area have the same number code. If you exceed your 4 hours of parking, you cannot move your car to a different spot, or simply throw a few quarters in to get the extra few minutes you might need. How is that convenient?

Soapbox



I had a time in my university life where I had to drive to campus, sometimes for only one class. Often those days the only way I was able to go to class was by counting all the spare change I could find to pay for the meter, because I had no money in my account. If I had not been able to put change in a meter, I would have been unable to attend class on those days. This is a commuter campus. There are over 30,000 students enrolled in the three universities, and only one on-campus housing option (2 if you are a UCD student, but there are less than 1,000 spaces). Even public transportation will cost you an extra \$250 this semester, and with all the closures and constructions, even RTD is no guarantee that you will get to campus when you need to.

AHEC needs to reevaluate its definition of accessible. Convenience and access for those that already have those in place is not accessibility. True accessibility means that convenience and access is available, and maintainable for ALL who need parking.

<https://www.ahec.edu/services-departments/parking/parking-news-and-updates> <https://www.ucdenver.edu/housing-and-dining>

https://en.parkopedia.com/parking/school/auraria-campus-co/?arriving=202408191600&leaving=202408191800#google_vignette

Featured Scholarship



August
Featured
Scholarship

GOOSTREE LAW GROUP BRIGHT FUTURES SCHOLARSHIP

**\$2,500
Award**

**500-1,000 word
essay required**

Learn more and apply
through the link in our bio!



Did you know GITA has scholarship tutors? Contact Soj at
ssirivan@msudenver.edu to be paired with one!

Featured GWS Courses



THE GENDER
INSTITUTE
FOR TEACHING
& ADVOCACY
MSU DENVER

Fall 2024

GENDER AND GLOBAL POLITICS

GWS/PSC 3530

GWS CRN: 53796 | PSC CRN: 53926

M/W | 12:30PM - 1:45PM

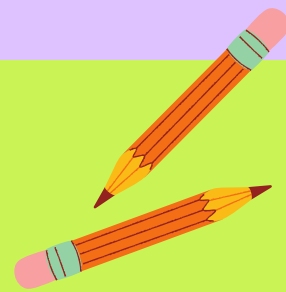


Apply feminist theories of international relations to critical global issues including war, global economic relations, human trafficking, and the environment to see how our understanding and solutions to these issues are gendered.

For questions or assistance contact:
The Gender Institute for Teaching and Advocacy
Boulder Creek 132
(303) 615-2052
gita@msudenver.edu

Click [Here](#) to Register

Featured GWS Courses



Fall 2024

Social Justice and Advocacy

T/TH 11am-12:15am

GWS 1090

GWS CRN:52822 | Chicano Studies CRN:52848 |

African American Studies CRN:52885

Students survey theories and methods of social justice work. Examine intersecting methods of oppression, modes of resistance, and strategies towards social transformation. Develop the analytical and practical skills necessary to address multiple and intersecting forms of oppressions and injustice



For questions or assistance contact:

The Gender Institute for Teaching and Advocacy

Boulder Creek 132

(303) 615-2052

gita@msudenver.edu



**THE GENDER
INSTITUTE
FOR TEACHING
& ADVOCACY**
MSU DENVER

Click [Here](#) to Register

Featured GWS Courses



FALL 2024

Multicultural Study of Sexualities & Gender

GWS 1200

T/Th 12:30-1:45PM

CRN: 53754

Fulfills Social/behavioral credit
and ESSJ credit



This multidisciplinary course looks into the study of sexualities and genders including their histories, major theories, racial intersections and issues. This class gives the foundational tools for more advanced classes in the GWS catalog. Students will explore the intersectional link between LGBTQ issues as well as sexuality and gender expression in Native American/Indigenous, African-American, Latinx, and Asian American communities .



**THE GENDER
INSTITUTE
FOR TEACHING
& ADVOCACY**
MSU DENVER

For questions or assistance contact:
The Gender Institute for Teaching and Advocacy
Boulder Creek 132
(303) 615-2052
gita@msudenver.edu



Click [Here](#) to Register

Featured CPD Course



Fall 2024

1 Credit
Course!

Got a lot of balls in the air?

TIME MANAGEMENT

CPD: 2300-002 | CRN: 53799
10/01 - 10/15 | Online

CPD: 2300-003 | CRN: 53800
10/28 - 12/07 | Online

Learning to manage time efficiently is a necessary skill for successful students, educators, and professionals. This course is designed to enable people to analyze their use of time, identify factors that contribute to wasting time, and improve the use of time through better prioritizing, scheduling, and increased motivation.

For questions or assistance contact GITA:
(303) 615-2052
gita@msudenver.edu



THE GENDER
INSTITUTE
FOR TEACHING
& ADVOCACY
MSU DENVER



METROPOLITAN
STATE UNIVERSITY
OF DENVER

Click [Here](#) to Register

Resources & Reminders

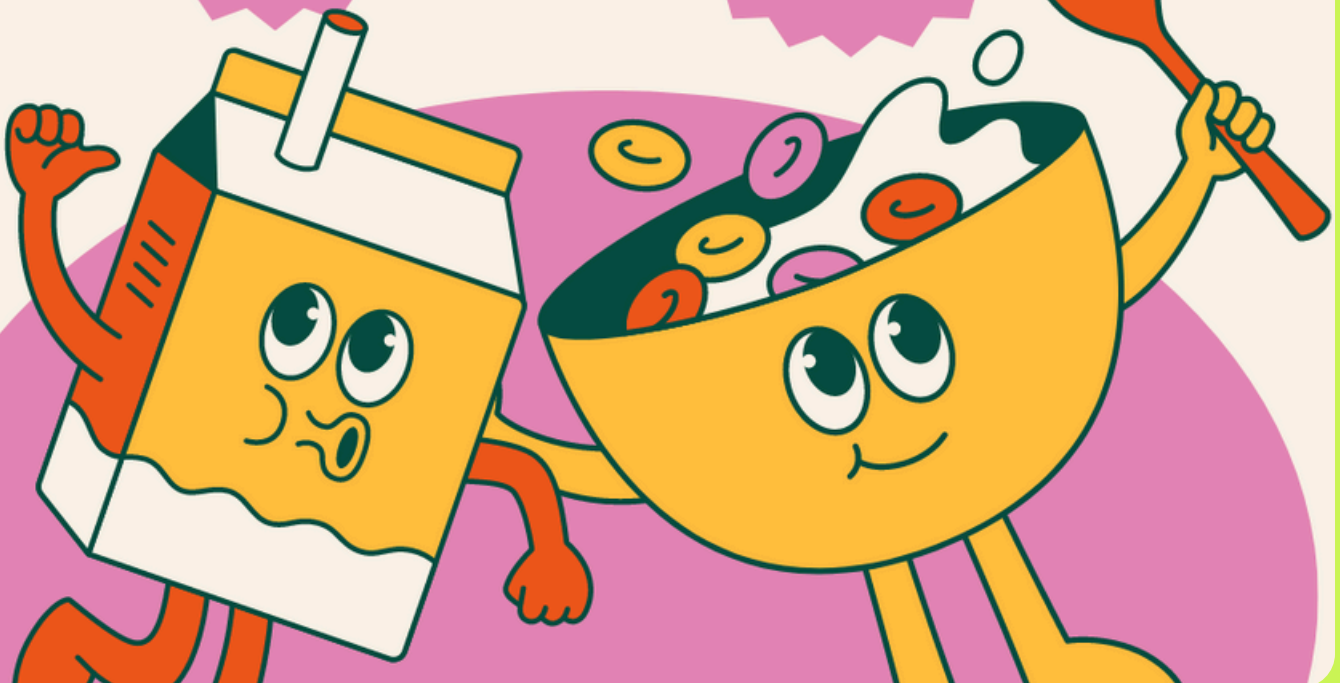


Don't Wait for Tuesday!


GITA's Cereal Bar is moving to
the Snack Stop!

GITA will no
longer be hosting
our Cereal Bar
weekly but we
still want to see
you!

Cereal will be
stocked in the
pantry
regularly, milk
in the fridge!



 Cereal lovers, take note! 

Our beloved GITA Cereal Bar is moving to a new home—the
Snack Stop! 

Resources & Reminders



Did you know GITA is home to two student organizations?

Feminist Alliance

&

Triota



-The mission of Feminist Alliance is to articulate discussion surrounding discrimination, sexism, gender, race, class, sexual orientation, and ableism.

-Membership is open to all students and staff of the Auraria campus who are concerned about the issues regarding social justice.



LEARN MORE

-Triota is committed to upholding feminist values that promote diversity, egalitarianism, and a nurturing academic atmosphere for every student. By becoming a member, you'll have the chance to connect with fellow students, collaborate on projects, and cultivate essential skills within a thriving community dedicated to feminist scholarship.



LEARN MORE

Resources & Reminders



Checkout GITA's New Discord Channels!

We're excited to announce the launch of GITA's new Discord channels! Dive into our vibrant community spaces where you can connect, share, and engage with fellow members. From academic support and resources to fun and shenanigans, there's something for everyone. Join us and be part of the conversation, collaboration, and celebration. Let's build a stronger community together. 🌟 Link in bio to join! 🗣️



Join GITA's Discord channel [HERE](#)

Resources & Reminders



THE GENDER
INSTITUTE
FOR TEACHING
& ADVOCACY
MSU DENVER

GITA HOLD



OF YOURSELF

FEATURING DR. JUDY STRATHEARN

Have you listened to our latest podcast episode?
Check it out [HERE](#)!

Resources & Reminders



As a team, part of our advocacy work is ensuring food access and education for all 🙌 To honor that, we've created an ever-growing recipe book full of low maintenance crockpot recipes (hint hint: most of these recipes can also work on the stove in a big ol' pot). In this book, you'll find different types of recipes, many of them being 5 ingredients or less! There are also tips, hints, and tricks for making the meals as easy and flavorful as possible. Finally, there are links to campus resources that you can utilize for support in getting ingredients. Feel free to bookmark, share, and visit [this google drive folder](#) anytime.



Resources & Reminders



If you are interested in learning more from a GWS lens about Palestine, here are some resources to check out!

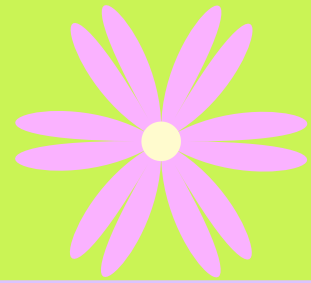


ACADEMIC RESOURCES

Click on the titles to learn more about the articles!

- [Rabab Abdulhadi, "The Palestinian women's autonomous movement"](#)
- [Judith Butler, "Why Is Bannon's Antisemitism Considered Alright?"](#)
- [Angela Davis, Interview "On Black Lives Matter, Palestine, and the Future of Radicalism"](#)
- [Angela Davis, Freedom Is a Constant Struggle: Ferguson, Palestine, and the Foundations of a Movement](#)
- [Nada Elia, "Justice is indivisible: Palestine as a feminist issue"](#)
- [Loubna Qutami, "Why Feminism? Why Now? Reflections on the 'Palestine is a Feminist Issue'"](#)
- [Therese Saliba, "June Jordan's Songs of Palestine and Lebanon"](#)
- [Simona Sharoni, Rabab Abdulhadi, Nadjie Al-Ali, Felicia Eaves, Ronit Lentin & Dina Siddiqi, "Transnational Feminist Solidarity in Times of Crisis"](#)
- [Ather Zia, "Their wounds are our wounds"](#)

Resources & Reminders



PFLAG is the nation's largest organization dedicated to supporting, educating, and advocating for LGBTQ+ people and those who love them.

<https://pflag.org/>



The Trevor Project is an American nonprofit organization focused on suicide prevention efforts among lesbian, gay, bisexual, transgender, queer, and questioning youth. They offer a toll-free telephone number where confidential assistance is provided by trained counselors.

<https://www.thetrevorproject.org/resources/>



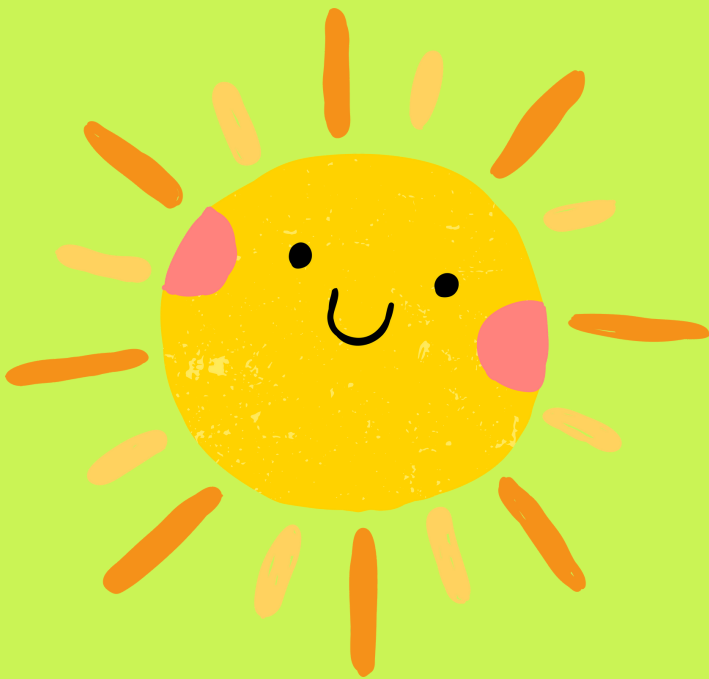
GLSEN is an American education organization working to end discrimination, harassment, and bullying based on sexual orientation, gender identity and gender expression and to prompt LGBT cultural inclusion and awareness in K-12 schools.

<https://www.glsen.org/activity/lgbtq-student-rights>

Follow Us



Join our online community to stay up to date with events, scholarships and opportunities!



Questions? Email us at gita@msudenver.edu