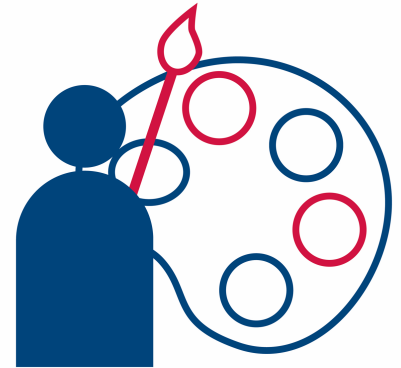


Design, Creativity, Media, and Performance

The Design, Creativity, Media and Performance pathway provides students with the opportunity to explore the creative fields and what it means to be a creative professional. Students choosing this pathway will develop and hone skills in creative thinking, problem solving, visual and written communication, and interactive design. Students will also develop a strong understanding of the way design, creativity, media and performance have in shaping culture and influencing society. During their experience student's will create their own bodies of work that will showcase their individual talents and abilities in their chosen mediums.



Majors and Concentrations

- Advanced Manufacturing
 - Industrial Design
- Art (BA)
- Art (BFA)
- Art Education
- Art History, Theory and Criticism
- Broadcast Journalism
- Communication Design
- Dance
- English
 - Literature, Film and Media Studies
 - Writing
- Individualized Degree Program
- Industrial Design
- Journalism
- Media Production and Leadership
- Music (BA)
- Music (BM)
- Music Education (BME)
- Public Relations
- Technical Writing and Editing
- Theatre (BA)
- Theatre (BFA)
 - Applied Theatre Technology and Design
 - Musical Theatre
- Video Production

Exercise: Identifying Interest Areas

Using the list of majors and concentrations above try to identify 3 to 5 majors you'd like to explore:

- Circle the majors in this pathway that (at first glance) sound the most appealing to you.
- Cross out the pathway that you have no interest in at all.
- Are there any majors or concentrations that you haven't circled or crossed out? Are there any majors that you'd like to learn more about in order to make a decision? Put a star next to those and let your Exploratory Advisor know about these majors.



Integrating General Studies and Exploratory Courses

Design, Creativity, Media & Performance Major Exploration Guide

Taking a mix of General Studies courses and exploratory courses (also referred to as “gateway courses” is a great way to explore your options for a major (and even a minor!). The University Catalog’s [Academic Program outlines](#) show the required courses for each major, including recommended or required courses that also fulfill General Studies requirements.

A complete list of General Studies options is available on the [General Studies website](#) and detailed [course descriptions](#) are available in the online University Catalog. Working with an Exploratory Advisor can help you with developing a strategy for using these requirements to explore your options in a way that is meaningful to you while keeping you on track to graduate within a reasonable time frame.



Recommended Courses

General Studies Courses

- o ARTH 1500 Art and Visual Literacy*
- o ARTH 1600 World Art I: Art Prior to 1400*
- o ARTH 1700 World Art II: 1400 to 1900*
- o ENG 2500 Introduction to Creative Writing*
- o ENG 2505 Rhetoric of War*
- o ENG 2512 The Rhetoric of Social Media*
- o ENG 2810 Vampire Films
- o ENG 2850 International Film
- o GWS 2770 Gender and Communication
- o JMP 1000 Intro to Journalism and Mass Media
- o MUS 1000 Introduction to Music*
- o MUS 1050 History of Rock and Roll*
- o THE 2210 Introduction to Theatre*
- o ENG 2000 Introduction to Textual Studies*
- o ENG 2860 Introduction to Film & Media Studies*
- o HPL 1130 Ballet Level I
- o HPL 1160 Jazz Level I
- o HPL 1180 Modern Dance I
- o HPL 1240 Tap Dance I
- o IND 1000 Introduction to Industrial Design
- o IND 1100 Materials I: Materials and Fabrication
- o IND 1300 Materials II: Design and Application*
- o IND 1450 Technical Drawing and CAD
- o IND 1470 Design Drawing Techniques
- o IND 2100 Digital Composition*
- o JMP 1050 Survey of Music, Video and Film
- o JMP 1100 Journalism Fundamentals
- o JMP 1450 Media Literacy*
- o JMP 2400 Basic Video Editing
- o JMP 2420 Basic Video Production*
- o JMP 2430 Introduction to Media Production
- o JMP 2435 Multimedia Writing & Production*
- o JMP 2450 Basic Interactive Production
- o JMP 2610 Introduction to Technical Writing & Editing*
- o JMP 2600 Beginning Photojournalism*
- o JMP 2700 Fundamentals of Public Relations*
- o MUS 1010 Essential Music Theory Skills
- o MUS 3821 University Treble Choir
- o MUS 3822 University Basso Choir
- o THE 2201 The Speaking Voice in Performance*

Gateway Courses- these are not General Studies courses, but they are great exploratory options for programs in this pathway

- o AMS 1010 Survey of Advanced Manufacturing and Workplace Preparedness
- o ART 1101 Studio Foundations: 2D
- o ART 1141 Studio Foundations: Drawing
- o ART 1300 Woods: Materials and Fabrication
- o ART 1501 Studio Foundations: 3D
- o ART 1505 The Visual Journal
- o ART 1531 Studio Foundations: 4D
- o CDES 2222 Fundamentals of Communication Design*
- o DANC 1210 Improvisation and Choreography
- o DANC 2905 Dance Repertory*
- o DANC 3440 Dance Production*

** Has a required prerequisite class. Check with your Exploratory Advisor for guidance on these courses.*