

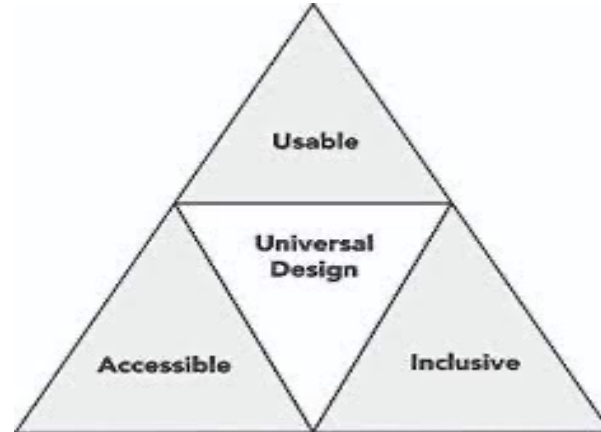
PEER ASSOCIATES PROGRAM, FALL 2023



SANAA RIAZ

FACULTY, ANTHROPOLOGY PROGRAM
DEPT. OF SOCIOLOGY AND ANTHROPOLOGY

Instructional Accessibility



Navigation

Planning, controlling, and recording the movement of a learner from one place to another in the online course next” and “previous” buttons

Readability

Similar content is grouped together
Heading and body styles are consistent
Increase comprehension and reduce eye fatigue that occurs with large blocks of text, multiple images, or embedded media.
common headers of “instructions,” “grading information,” and “submission instructions”).
Naming conventions are consistent across the course

Accessible text

accessibility tools and checkers to assist in the review of the accessibility of the text.
search an accessible PDF for keywords

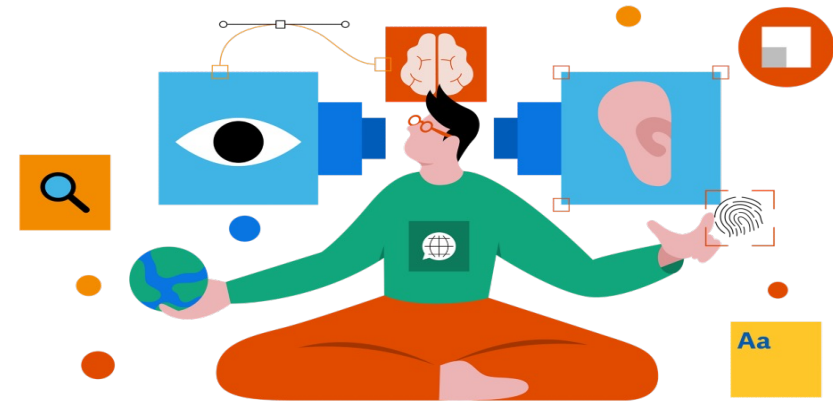
Instructional Accessibility



Accessible Media

Images include alternative text (alt-text), long descriptions, or other means of description. Images that are decorative are marked as such

Videos and audios include captions or transcripts



Vendor Accessibility Statements

Accessibility statements for all software, LMS, apps and external platforms are provided in the course

Instructional Accessibility at MSU Denver



CTLD Instructional Accessibility Center for instructors

Proactive Accessibility Certification

You can add an accessibility certification to your resume by taking 6 courses. Don't need the certification? Just come and take a quick course on accessibility

Instructional Accessibility services

<https://www.msudenver.edu/teaching-learning-design/instructional-accessibility/services/>

Contact Zachary Clark, Senior Instructional Accessibility Specialist in the CTLD

Instructional Accessibility
InstructionalAccessibility@msudenver.edu

Access checks

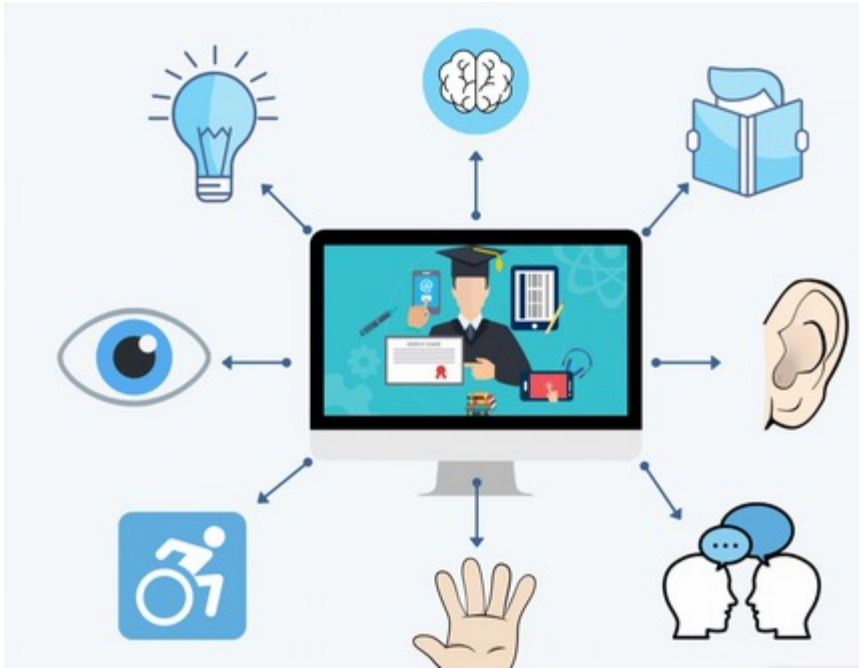
Did you know? Tables should only be used in data and not for layout in order to be accessibility compliant!

You can ask the instructional accessibility group to get your course checked for just one area

Here is the link:

<https://www.msudenver.edu/teaching-learning-design/instructional-accessibility/services/access-check-process/>

Instructional Accessibility at MSU Denver

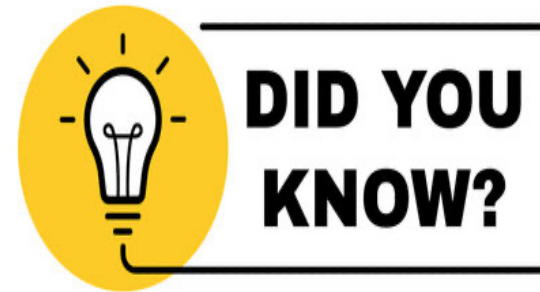


Access checks

You can ask the instructional accessibility group to get your course checked for just one area

Here is the link:

<https://www.msudenver.edu/teaching-learning-design/instructional-accessibility/services/access-check-process/>



Did you know?

Tables should only be used in data and not for layout in order to be accessibility compliant!



What not to use?

Smart Art

Center for Teaching, Learning and Design

Supporting excellence in teaching and learning at MSU Denver

Instructional Accessibility at MSU Denver

Course accessibility reviews

Instead of one piece of content, course reviews is a thorough accessibility check

Here is the link:

<https://www.msudenver.edu/teaching-learning-design/instructional-accessibility/services/course-access-review-process/>

Coffee House at the Library from 1-2pm

Accessibility talks in which CTLD accessibility buys you coffee to learn about accessibility topics. Look out for the schedule at the beginning of the semester!

Accessibility Guides and Resources

<https://www.msudenver.edu/teaching-learning-design/instructional-accessibility/guides-resources/>

Check the accessibility of an Open Educational Resource

Found something interesting to use as textbook, discussion, assignment in a course? Send it over to access check before adding it to your Canvas course

Image references

<https://www.washington.edu/doit/20-tips-teaching-accessible-online-course>

<https://zipboard.co/blog/elearning/accessible-elearning-courses/>

<https://www.innovativeeducators.org/products/creating-an-accessible-online-course-20-inclusive-design-tips>

<https://www.depts.ttu.edu/elearning/newsletter/may2020/story9-accessibility-course-content.php>

<https://www.msudenver.edu/>

https://www.msudenver.edu/early-bird/how-to-make-your-course-more-accessible/?utm_source=MarketingCloud&utm_medium=email&utm_campaign=Early+Bird+-+Feb.+14%2C+2022&utm_content=https%3A%2F%2Fwww.msudenver.edu%2Fearly-bird%2Fhow-to-make-your-course-more-accessible%2F

<https://stock.adobe.com/search?k=did+you+know>

<https://www.echorivera.com/blog/alternatives-to-process-smartart>