

# SOCIAL WORK NEWS

## MSU Denver - Department of Social Work Newsletter

### In this issue:

- ◇ Learn about the Social Work Department history
- ◇ Upcoming Campus Events
- ◇ Job opportunities
- ◇ Volunteer Opportunities



In other news, last month's panel discussing the dangers of fentanyl, featuring Rep. Leslie Herod and moderated by our own Drs. Greathouse and Mattered Basset, is now available to watch online, [Watch here!](#)

You can also check out a few articles from our local news!

[Denver Channel](#), [CBS](#), [9 News](#)

### [April is Child Abuse Prevention Month!](#)

There are many ways to get involved and learn more, during child abuse prevention month and all year long. This April, the hope is you will do more than see pinwheels in your community.

It's because planting pinwheels represents the bright childhoods we all want for children.

To learn more please visit [Illuminate Colorado](#).

\*You can also pick up a pinwheel from the front desk at CN201.

MSU Denver  
Department of Social Work

MSW 2011  
**10/  
YEARS  
/25**  
BSSW 1996

Be the change. See it whole.  
2021-2022

**1992** First faculty hired to start the "social welfare major" in School of Letters, Arts and Sciences as an accredited social work program

**1996** BSSW Program accredited by the Council on Social Work Education

**2006** First CSWE undergraduate online social work program

**2011** MSW Program began accreditation process with Council on Social Work Education

**2021** MSW Program graduated its 1,000th student

**2,412** Total degrees awarded.



**Palliative Care  
Social Work  
Conference**

**WHEN:** Friday April 8<sup>th</sup>, 8:15 AM to 2:40 PM

Doors will open for check-in and breakfast at 7:45 AM

**WHERE:** Tivoli Student Union, Turnhalle Room

Resilience in health care professionals means improved care for patients and their families. Based on conference evaluation feedback, all sessions are related to resilience and trends important for palliative care social workers and other allied health professionals to learn.

[Click here](#) to learn more and register!

## Student Engagement & Events

### Important dates & Events:

⇒ Fall Registration is open! [Check here](#) for your date and times.



# Liberation from Colonization

Finding healing, meaning, and connection through decolonized mental health care.

**APRIL 13**  
2PM-3PM

**Health Center**  
at AURARIA

**Speaker**  
**JALISA WILLIAMS, MSW, LCSW**  
Clinician, Consultant & Lecturer

### Liberation from Colonization

**WHEN:** Wednesday, April 13, 2022, 2 – 3pm

Sign up [here](#) or ZOOM: Meeting ID: 884 4625 9513. Passcode: 778071

## Connections in Behavioral Health Luncheon

**Tivoli 320 | April 21 | 11 AM – 2 PM**

Expand your network at this luncheon event designed to connect students in behavioral health related majors with employers seeking to hire.

**You're Invited!**

Open to All Majors and students seeking career-focused opportunities, internships and connections

Scan QR Code to Register and to View the Employer List (access event in Career Link via The Student Hub)

Attend and be entered into several GIFT CARD prize drawings!

Questions? Contact The Classroom to Career Hub | C2hub@msudenver.edu

[Click here](#) for more information



# JUNTOS LUCHAMOS

**A POSTCRITICAL ETHNOGRAPHIC AND PHOTOVOICE STUDY ON LATINA/O/X STUDENT CIVIC ENGAGEMENT PRACTICES AT A HISPANIC-SERVING INSTITUTION**

The purpose of this study is to understand how Latina/o/x students define civic engagement and democratic participation. Your thoughts will advance our understanding of how Latina/o/x communities participate in our democracy.

Participants will take

- photographs during a one-month time frame,
- participate in three 90-minute meetings, and
- attend an exhibition of the results and photographs.

You are eligible to participate if:

- enrolled at MSU Denver,
- identify as a Latina/o/x, Chicana/o/x, Hispanic, or by a nationality tied to a Latin American country,
- 18 years of age or older.

For participating in this study you will receive \$25 VISA gift cards after each meeting for a total of \$100.

To participate please visit [tinyurl.com/JuntosLuchamos](https://tinyurl.com/JuntosLuchamos) or scan the QR code.

Contact the principal investigator:  
Liliana Diaz,  
Ph.D. Candidate  
at [liliana.diaz@du.edu](mailto:liliana.diaz@du.edu)

Faculty Sponsor:  
Cecilia Orphan, Ph.D.  
Assistant Professor  
[cecilia.orphan@du.edu](mailto:cecilia.orphan@du.edu) JRB # 1826275-1



### LEGAL ADVICE SESSION/SESIÓN DE AYUDA

#### LEGAL

For DACA, Refugee, International, and immigrant Students Virtually meet with immigration attorneys for up to 30 minutes to learn about important updates, the status of DACA, review forms, learn about your rights, and questions you might have about immigration law! You will receive legal info session [here](#).

Non-MSU students or family members can sign up as well!

# NALOXONE TRAINING

Presented by **SAFEProject**  
Stop the Adolescent Heroin Crisis

**\***  
In Colorado, emergency room visits for opioid-related overdoses more than doubled between March 2019 and August 2020.  
— Centers for Disease Control and Prevention

**Wednesday, May 4th, 2022, 12 – 1pm**

Via Zoom, [Click here](#). Or Meeting ID: 856 1130 2596  
Passcode: 204044

THE GENDER INSTITUTE OF TEACHING & ADVOCACY

*\*Students with ASSET and/or DACA encouraged to apply!*

# GUARANTEED TO SUCCEED

**NO ESSAY MINI GRANT**

**\$500 - \$1000**  
**DEADLINE: April 30, 2022**

Are you in financial need to pay for college? Has your financial aid run out?

**REQUIREMENTS**

- Filed FAFSA or CASFA for 2022-2023
- Attached Path to Graduation form!
- Pell-eligible or meet income requirements
- Cumulative 2.0 + GPA
- ≥ 60 credit hours completed by Fall
- Enrolled in ≥ 6 credit hours for the Fall by August 22, 2022

**APPLY HERE!**

Questions?  
Email: [ssirivon@msudenver.edu](mailto:ssirivon@msudenver.edu)  
(GITA's Retention & Success Advisor)

[Click here](#) for more GITA information

Current Job Opportunities

**Social-Emotional Learning Counselor | Boulder, CO**

Social-emotional learning (SEL) is intentionally integrated into every aspect of our program. As our SEL Counselor, you will report to the Program Director and be responsible for facilitating our six-year SEL curriculum, including one-on-one counseling, group workshops, and community outreach.

Click [here](#) for more information.

**University of Colorado - Office of Recruitment & Outreach (ORO) Recruiter**

School of Education & Human Development has an opening for a full-time University Staff (unclassified) Office of Recruitment & Outreach (ORO) Recruiter position.

Click [here](#) for more information.

**Program Coordinator- Lake and Summit County**

CASA of the Continental Divide

Leadville, CO

We are hiring either Part-time or Full-Time with a minimum of 24/week for full benefits. Position includes options for remote work with occasional hours in office and a flexible work schedule. We strongly encourage people of color, lesbian, gay, bisexual, transgender, queer and non-binary people, veterans, parents, and individuals with disabilities to apply. CASA of the Continental Divide is an equal opportunity employer and welcomes everyone to our team.

Click [here](#) for more information

**Academic Success Coordinator, Colorado State University- Fort Collins, CO**

The Academic Success Coordinator in the Department of Psychology of the College of Natural Sciences is a full time 12-month Administrative Professional position. This position requires in-person work during regular business hours, Monday through Friday. The Department of Psychology houses one of the largest undergraduate majors at the University, serving over 1,300 undergraduate students.

Click [here](#) for more information



**Red Rock Recovery Center**

Some positions include Behavioral Health Technician, Recovery Support Specialist, Case Management, and administrative roles.

Click [here](#) for more information

**Consultants for Children, Inc.**

Part-Time and Full-Time positions available

Consultants for Children, Inc., strives to provide the best services to its clients by joining with passionate, dedicated people in this ever-growing field.

\*\*\*Please reach out to our hiring coordinator at [toriw@cfcco.com](mailto:toriw@cfcco.com) for further information\*\*



As a reminder the classroom to [Career Hub \(C2 Hub\)](#) at MSU Denver will jump start your career through professional development and personalized career planning for current students and Alumni!

Click [here](#) to learn more!



## VOLUNTEER



### Volunteer Opportunity

The Phoenix Center at Auraria is looking to train new helpline advocates in February and March, and we want YOU! This is an excellent opportunity for those looking to become therapists, counselors, and social workers or work in any social justice related position. The PCA Helpline is a 24-hour/7-days a week helpline for services related to interpersonal violence for students, staff, and faculty at CU Denver, CU Anschutz, MSU Denver, and CCD. The helpline is staffed by volunteer advocates who commit to taking one-two shifts per month and attending monthly supervision meetings. Click [here](#) for the Volunteer form.

PeaceWorks is a non-profit 501(c)3 charity providing assistance for survivors of relationship violence/abuse: intimate partner violence (IPV), domestic violence, teen dating violence and stalking; sex trafficking and sexual assault outside of relationship violence. Click [here](#) for the Volunteer Form.



#### What We Do

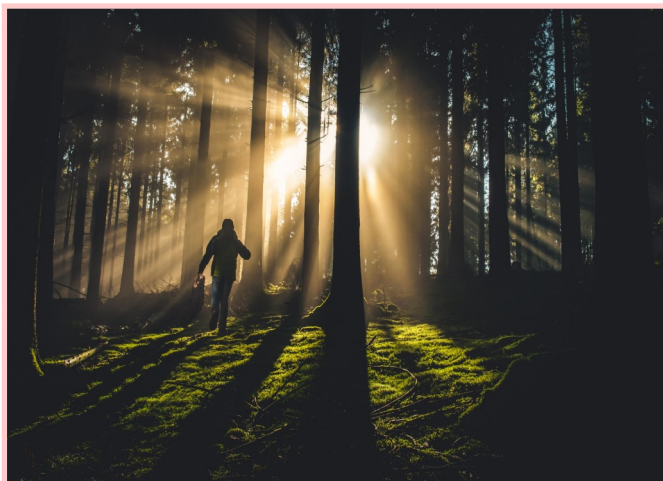
NAMI Colorado works to educate, advocate, listen and lead to improve the lives of people with mental illness and their loved ones.

#### What is the NAMI Peer-to-Peer Education Program that I will be leading?

NAMI Peer-to-Peer is a free, 8-session course for adults living with mental health challenges. NAMI Peer-to-Peer provides an educational setting focused on recovery that offers respect, understanding, encouragement and hope. The NAMI Peer-to-Peer education program is:

- \*Free and confidential
- \*Taught by trained Peer Leaders living in recovery themselves
- \*A great resource for information on mental health and recovery

For more information please visit, [NAMI](#)



**"Do not follow the path that may lead.**

**Go, instead, where there is no path and leave a trail."**

*-Ralph Waldo Emerson*

For easy access to all of the links and attachments in this newsletter, visit: <https://www.msudenver.edu/social-work/swk-newsletter/>