

## 10th MOUNTAIN TRAIL OPEN FOR '82—83 SKI SEASON

The first section of the 10th Mountain Trail is ready for use by cross-country skiers. The trail proposed and planned by Fritz Benedict, 126 ENG, will connect the ski towns of Aspen and Vail. This winter it is possible to ski from Aspen to Sylvan Lake, outside of Eagle. The route provides five days of skiing with four overnight facilities: the two newly constructed McNamara Huts and two existing ski touring centers.

Fritz Benedict designed the two huts which were built this summer outside of Aspen. The huts were provided by the friends and family of Robert McNamara in honor of his wife Margaret.

The "McNamara Hut" is located six miles above Aspen between the Hunter Creek Valley and the Woody Creek Valley. The hut comfortably accommodates 15 people, with wood-burning stoves for heat and cooking. Kitchen utensils and firewood are provided. Skiers must bring their own sleeping bags and food.

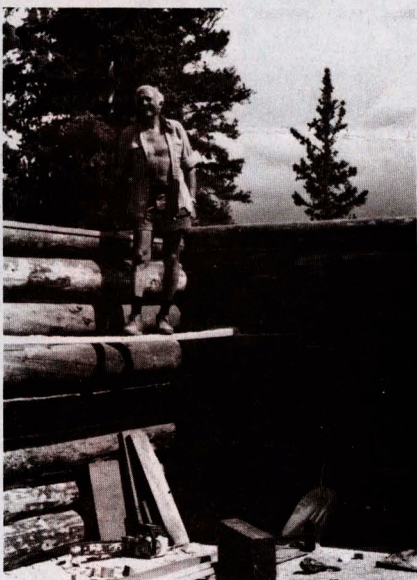
"Margy's Hut" on the ridge of Yeckel Mountain is an eight-mile ski from the McNamara Hut. Margy's Hut has a tremendous view of the Williams Mountains from its south facing deck. The hut is built of logs and also accommodates fifteen people.

Fritz established the 10th Mountain Trail Association (T.M.T.A.), to build and maintain the trail system, by contributing \$30,000 worth of professional services. The Gates Foundation has offered a challenge grant of \$100,000 to the T.M.T.A. to be matched by November 1, 1983. \$50,000 of this \$100,000 has been raised, half of which was donated by Betty Schuss. Dave Dodge also gave a substantial contribution. It is hoped that other 10th Mountain Division men will join in helping to match the Grant.

Jose Acebo, L-87, has been a tremendous help to T.M.T.A. by assisting with the establishment of the organization and providing his accounting services. Ben

Duke, L-86, and Bob Parker, HQ-87, have agreed to be on the Board of Directors.

If you would like to send contributions to the Tenth Mountain Trail Association, please do so by writing or calling the T.M.T.A., c/o Fritz Benedict, 1280 Ute Avenue, Aspen, Colorado 81611, (303) 925-3481. All contributions are tax deduct-

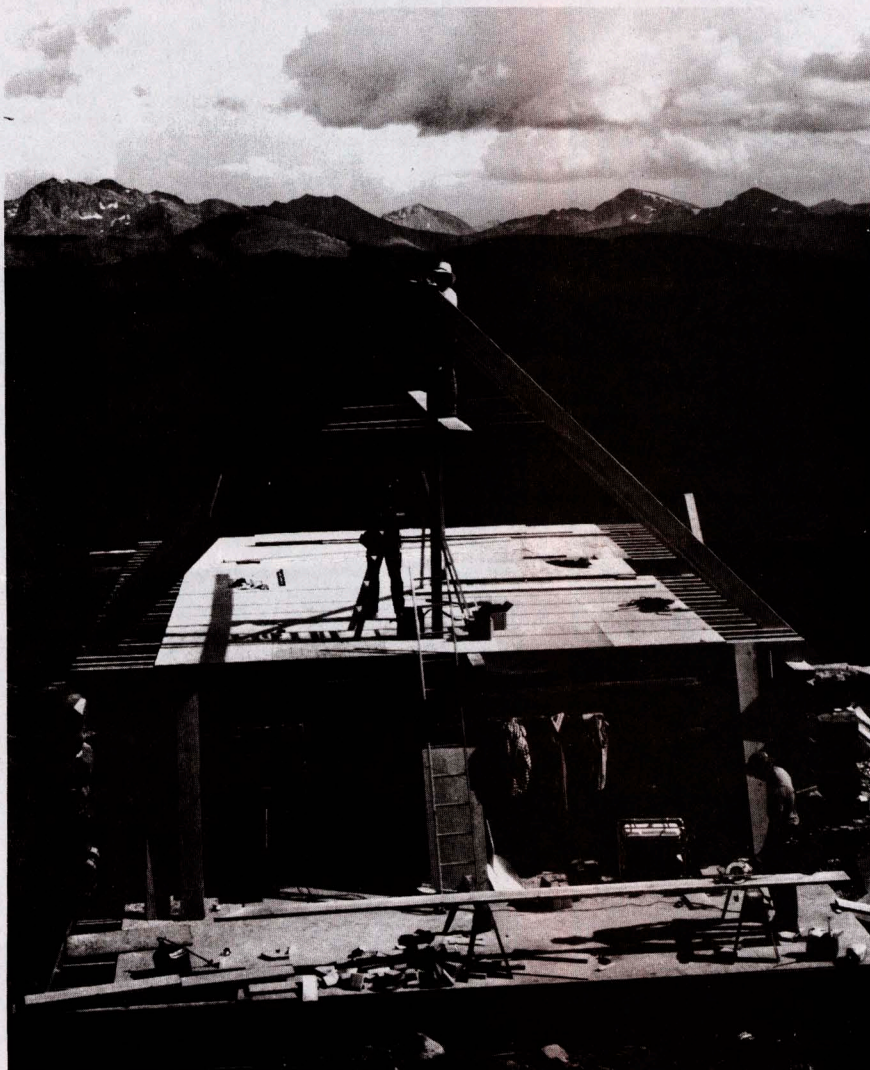


*Fritz Benedict, architect for both the McNamara and Margy Huts, served with the C-87 in 1942 and with the 126 ENG BN in 1944-45. He poses at Margy's Hut.*

ible, and remember that whatever you give will be matched by the Gates Foundation.

If you are interested in receiving a brochure to reserve the new huts for a ski trip please write:

Tenth Mountain Trail Association  
Post Office Box 9000  
Aspen, Colorado 81612



*Margy's Hut near Aspen, the second hut to be built on the Aspen to Vail 10th Mountain Trail, is in memory of Mrs. Robert McNamara.*